

LONDON GATWICK

LOC/DME

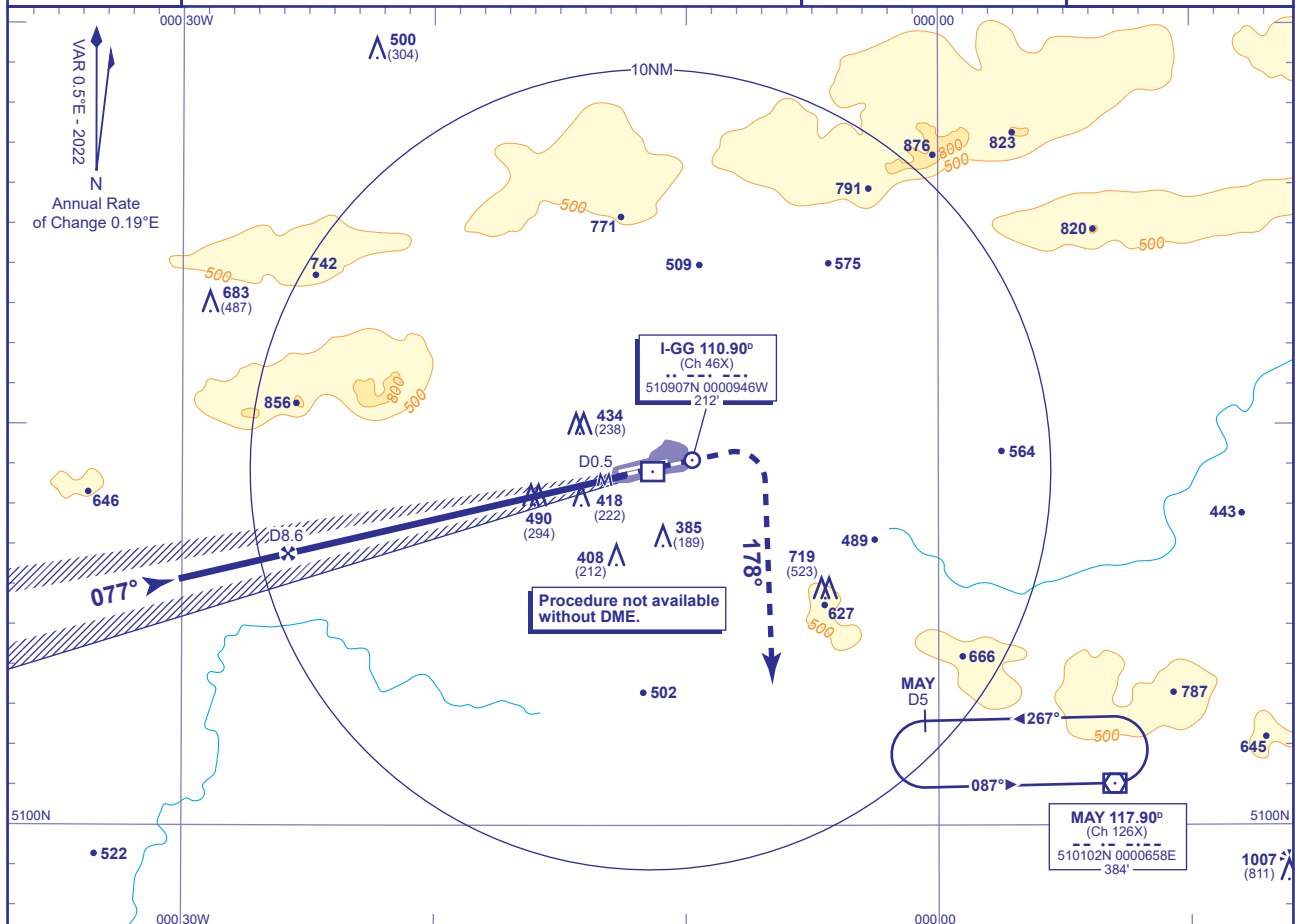
RWY 08R

(ACFT CAT A,B,C,D)



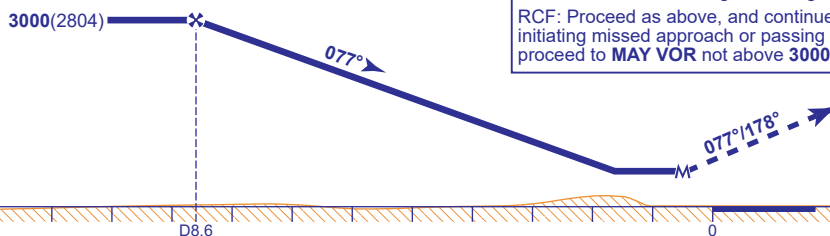
APP	126.825, 118.950, 129.025	GATWICK DIRECTOR	AD ELEVATION 203
TWR	124.230, 134.230, 121.500*	GATWICK TOWER (*Emergency)	THR ELEVATION 196
	121.805	GATWICK GROUND	OBSTACLE ELEVATION
ATIS	136.525	GATWICK INFORMATION	1007 AMSL (811) (ABOVE THR)
			BEARINGS ARE MAGNETIC

TRANSITION ALTITUDE	6000
---------------------	------



RECOMMENDED PROFILE Gradient 5.2%, 320FT/NM

DME I-GG	8	7	6	5	4	3	2
ALT(HGT)	2800(2604)	2480(2284)	2160(1964)	1840(1644)	1520(1324)	1200(1004)	880(684)



MAPt I-GG DME 0.5

Climb to **3000** - straight ahead until passing **2000** or **I-GG inbound DME 1** whichever is later, turn right heading **178°** then as directed by ATC.

RCF: Proceed as above, and continue on heading 178°, 2 minutes after initiating missed approach or passing **I-GG DME 7**, whichever is later, proceed to **MAY VOR** not above **3000**.

Aircraft Category		A	B	C	D	Rate of descent	G/S KT	160	140	120	100	80
OCA (OCH)	Procedure	740(544)	740(544)	740(544)	740(544)		FT/MIN	850	740	640	530	420
VM(C)OCA (OCH AAL)	Total Area	800(597)	800(597)	1020(817)	1120(917)							

NOTE 1 For arrival and initial approach procedures see AD 2-EGKK-7-17.

CHANGE (5/25): VM(C)OCA(OCH AAL) CAT C.